

LAPIS LUNA

Established in 1999, Lapis Luna produces exceptional value wines from undiscovered California vineyards. Each label is a rendition of a 400 year old copperplate engraving showing a faceless hero reaching for the moon.

REACH FOR THE MOON

LINED
PRICED:

Winemaker: Dave Rosenthal

Artwork: Courtesy of Herman Hugo, 1624

ORDERS@LAPISLUNAWINES.COM



SAUVIGNON BLANC

SAUVIGNON BLANC

LAPIS LUNA 2020

AVA: NORTH COAST, CALIFORNIA

100% SAUVIGNON BLANC

VINEYARD: PAULI RANCH,
MENDOCINO

AGING: 100% STAINLESS STEEL

ALC: 13.8% ABV

UPC: 860115002401

Tropical fruits, white peach,
and ripe pineapple perfume
the nose. Juicy acidity,
refreshing, with crisp citrus
and stone fruit flavors
finishing with delicious length.

2018: WINE ENTHUSIAST 91 Points, Best Buy



CHARDONNAY

CHARDONNAY

LAPIS LUNA 2018

AVA: NORTH COAST, CALIFORNIA

100% CHARDONNAY

VINEYARD: PAULI RANCH,
MENDOCINO

OAK: 10% NEW FRENCH

BARREL AGED: 9 MONTHS

ALC: 14.2%

UPC: 860115002432

Orange zest, ripe pineapple,
toast and vanilla on the nose.
Full-bodied, fresh and lively,
with lush white peach and ripe
apple flavors leading to a
savory buttered finish.



PINOT NOIR

PINOT NOIR

LAPIS LUNA 2018

AVA: NORTH COAST, CALIFORNIA

100% PINOT NOIR

VINEYARD: PAULI RANCH,
MENDOCINO

OAK: 10% NEW

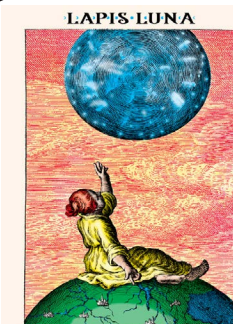
CLONES: POMMARD 4 & 5, DIJON

114, 115 & 667

ALC: 14.1%

UPC: 860115002463

Ripe red cherries,
boysenberries, purple
flowers and nice spices.
The palate is juicy, smooth,
polished and delicious.



RED WINE BLEND

RED WINE BLEND

LAPIS LUNA 2020

AVA: LODI, CALIFORNIA

VARIETALS: 45% MALBEC
35%, CABERNET

SAUVIGNON, 20% MERLOT

VINEYARD: PAULI RANCH

OAK: 10% NEW FRENCH

BARREL AGED: 10 MONTHS

ALC: 14.3%

UPC: 860115002418

Purple flowers, ripe red fruits,
dark and brooding, crushed
blackberries, faint cloves and
sage, layers upon layers.
Juicy, with balanced structure
and a round lushness, it
finishes long.



CABERNET SAUVIGNON

CABERNET SAUVIGNON

LAPIS LUNA 2020

AVA: LODI, CALIFORNIA

100% CABERNET SAUVIGNON

OAK: 5% NEW FRENCH, 15%
1-YEAR-OLD FRENCH

BARREL AGED: 16 MONTHS

ALC: 14.2%

UPC: 860115002425

Crimson in the glass with aromas
of dark chocolate, cherry and a
hint of roasted coffee. Rich and
full textured on the palate with
profound dark fruit. The finish
brings succulent tannins and is
long reaching.



ZINFANDEL

ZINFANDEL

LAPIS LUNA 2020

AVA: NORTH COAST, CALIFORNIA

VARIETALS: 80% ZINFANDEL,
20% SANGIOVESE

VINEYARD: PAULI RANCH

OAK: 10% NEW FRENCH & USA

BARREL AGED: 10 MONTHS

UPC: 860115002449

ALC: 14.3%

Rich, dark and enticing. The
aromatics deliver savory black
pepper blended with dark
floral aroma. Dark &
decadent blueberry
& blackberry cobbler.

2017: WINE ENTHUSIAST 90 Points, Best Buy